

Outdoor Museum

Art Strategy

Guidance Note

April 2024

1. Purpose of Grant

A total budget of £55,000, which allows for a maximum award of £15,000 in any given year, has been allocated by Argyll and Bute Council to the Outdoor Museum. Awards are available for up to a maximum of £3,000 based on a maximum intervention of 50% of the total costs incurred in developing, fabricating / producing and installing an art work in the Outdoor Museum, Colquhoun Square, Helensburgh.

2. Submission Process

There will be one call for applications per year advertised on the Argyll and Bute website, with a maximum available funding pot of £15,000 per annum for a minimum of three years.

Application Type	Maximum Available Funding	Match Required	Scored by	Final Decision by
Type 1	£500	50%	Design Panel	Design Panel
Type 2	£3,000 (inclusive of any prior Type 1 award)	50%	Design Panel	Area Committee
Type 3	£0	0%	Design Panel	Area Committee

Applications are to be made taking account of Helensburgh and Lomond Area Committee dates and lead in times for this.

All works covered by an award must be completed within 12 months of that award being made e.g. if an application for development costs was determined on 5th April 2024, the respective works must be complete by 5th April 2024. If the same group subsequently makes an application for production/installation costs, those works would need to be complete within 12 months of the later award date.

3. Match Funding

Type 1 and Type 2 applications will require 50% match funding. Please see below list of possible sources of match funding. Please note this list is not exhaustive and funds availability and criteria may change over time.

- **Awards for All**
<https://www.biglotteryfund.org.uk/global-content/programmes/scotland/awards-for-all-scotland>
- **Creative Scotland**
<http://www.creativescotland.com/funding/funding-programmes/open-project-funding>
- **Tesco Bags of Help**
<https://www.groundwork.org.uk/Sites/tescocommunityscheme/pages/Category/the-tesco-bags-of-help-programme-tes2>

For more funding ideas and a chance to do your own funding search, check our funding webpage <http://www.argyll-bute.gov.uk/community-life-and-leisure/grants-and-funding>

4. Application Types

Type 1: Applications for Development Costs

The maximum funding available for initial development costs is £500 in respect of any single application and for not more than two such awards to be made in any given year. A minimum of 50% match funding is required for applications to be considered. This award can cover the following costs:

- Appointing an artist to develop a design;
- Professional advice on technical aspects of production of design;
- Professional advice on production costs.

Applications for development costs will be accepted once annually. Applications for development costs should complete this form and return to arlene.cullum@argyll-bute.gov.uk Applications will be assessed by the Design Panel based on eligibility and scoring criteria in Section 4.

Type 2: Applications for Total Costs

The maximum total funding available for developing, fabricating/producing and installing an art work is 50% of total costs up to a maximum of £3,000. A minimum of 50% match funding is required for applications to be considered.

Applications for total costs will be accepted once annually. Applicants for total costs should complete this form and return to arlene.cullum@argyll-bute.gov.uk Applications will be assessed by the Design Panel based on assessment and scoring criteria in Section 4 and recommendations taken to the Helensburgh and Lomond Area Committee for final approval.

Type 3: Applications for Plinths (No funding required)

If you wish to donate an artwork to the Outdoor Museum, applications for the allocation of a plinth are welcomed. Applications for plinths with no requirement for funding should complete this form and return to arlene.cullum@argyll-bute.gov.uk Applications will be assessed by the Design Panel based on assessment and scoring criteria in Section 4 with recommendations taken to the Helensburgh and Lomond Area Committee for final approval.

In order for your application to be considered, you must supply all information required in order to fit with the Panel Meeting and Helensburgh and Lomond Area Committee timeline.

5. Assessment Criteria

The below criteria applies to all application types unless otherwise stated.

5.1 Principles

All applications should meet the following principles:

- That proposed art works must have a direct connection with Helensburgh, Lomond and the immediate local area, its history and/or culture;
- That proposed art works must not be seen as a means of advertising any business;
- That the subject matter of any art works should not cause offence i.e. likely to be upsetting, insulting, or objectionable to some or most people;
- That the materials and methods of fabrication/production for any art work should be of commensurate type and quality as the original installations i.e. artefacts encapsulated in acrylic, bronze and/or stone reproductions of original artefacts;

- Artworks must be in keeping with the character of the Outdoor Museum and surrounding area;
- Interpretation material should be provided to accompany any artwork. This should be included on the plinth itself and provided to be published on the Outdoor Museum website. Applicants must account for costs and design implications of any associated interpretation material;
- Art works should be designed to require little or no maintenance.

5.2 Scoring Matrix

Criteria	Allocation of score on a scale of 1 to 3
Community Link – proposal must demonstrate a strong link with Helensburgh and the surrounding area.	1 – partial compliance 2 – good evidence of compliance shown 3 – comprehensive evidence provided
Quality – Proposals should provide a high quality artwork of commensurate quality to the existing collection (<i>not applicable to Type 1 applications for Development costs</i>)	1 – partial compliance 2 – good evidence of compliance shown 3 – comprehensive evidence provided
Character – Proposals should be in keeping with the character of the surrounding streetscape and should not present an obtrusive or incongruous feature	1 – partial compliance 2 – good evidence of compliance shown 3 – comprehensive evidence provided
Risk – applicant to provide assurance that the artwork can be delivered and installed	1 – partial compliance 2 – good evidence of compliance shown 3 – comprehensive evidence provided
Durability – artworks should be produced in a material which is durable and appropriate with minimal maintenance requirements (<i>not applicable to Type 1 applications for Development costs</i>)	1 – partial compliance 2 – good evidence of compliance shown 3 – comprehensive evidence provided

Technical Guidance

6. Website and QR Codes

The Outdoor Museum is accessible through a bespoke Outdoor Museum website <http://theoutdoormuseum.com>, which carries extended content about the artefacts on display on the plinths in the town centre. It also has an Archive section – going forward the idea would be that all nominations for a plinth would be archived on the website.

Each plinth has a QR code that connects the viewer to this website following the suggestion of Helensburgh Community Council. The website presents Helensburgh’s incredibly rich seam of history and heritage, in an easy to use resource that reflects the local community’s ownership of a creative contribution to, the Outdoor Museum.

7. Install of Text

The vinyl’s for sandblasting were produced by McIntyre Memorials, who also undertook the install/sandblasting of the text in situ.

Notes:

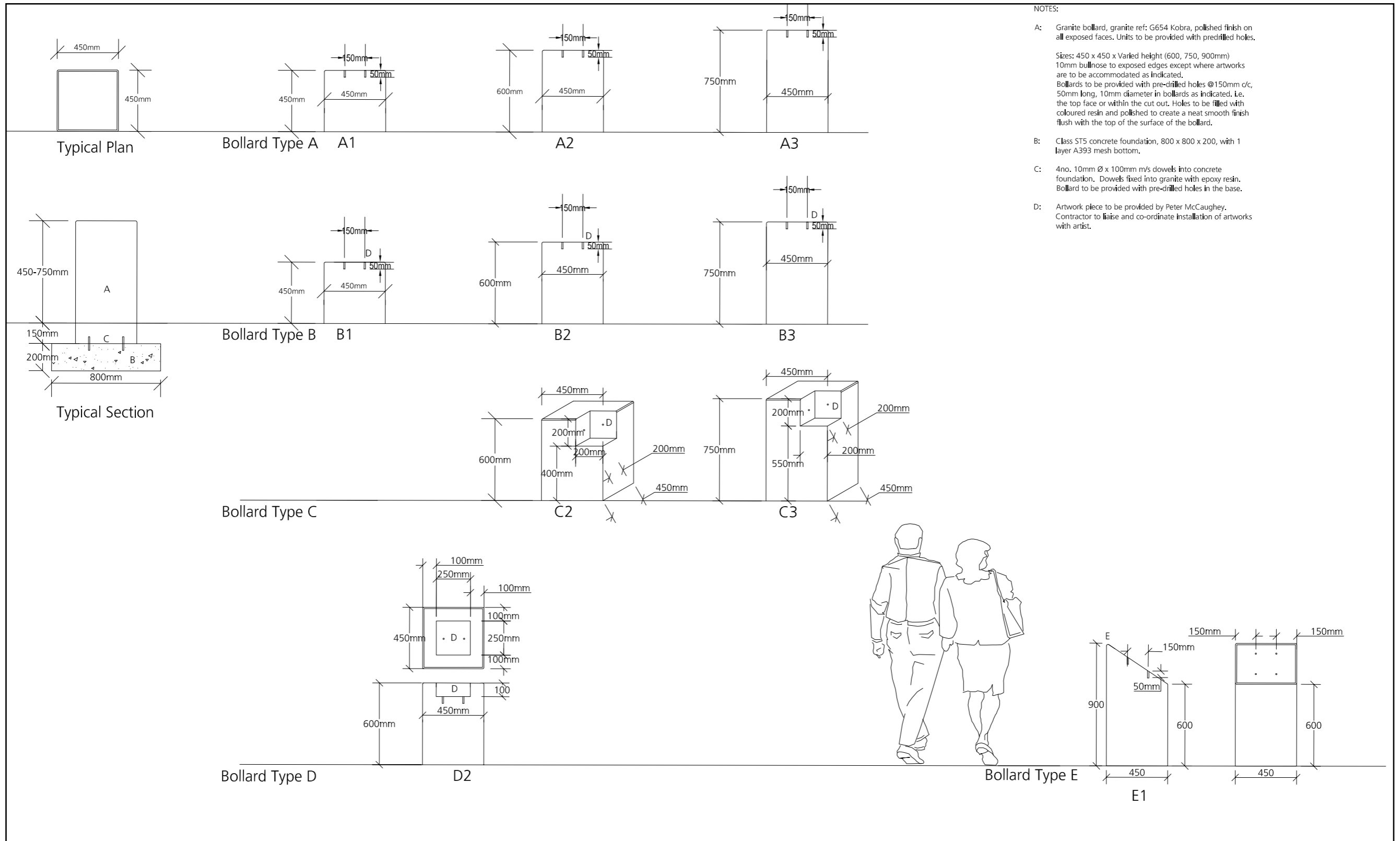
- the weather conditions for installing the text, i.e. sandblasting are critical, it cannot be wet or too windy
- the duration of sandblasting the stone is also critical, as the stone should not be too deeply blasted
- it is of the utmost importance that the project manager signs off the position of the stencils for sandblasting before sandblasting takes place
- it is essential that no text is placed on a roadfacing side of a plinth

8. Plinths

The plinths are made from granite and are 45cm square and bullnosed. The height varies. All plinths are cored with 2 - 4 holes to accommodate future artworks to be installed. The next 2 pages give a map of the location of the plinths and a table of measurements of the holes, surveyed by MacLay Civil Engineering. Please note that the location of the holes is not regular and the table by needs to be consulted before the production of new work.

Notes:

- The existing artworks are fixed with a pinning system into the holes already cored into the top of the plinths
- Previous contractors have used a special underwater bonding agent used in oilrig and marine conditions to fix the bronzecasts, stonework and resin in place.
- It is essential that any moulds produced are safely stored in case objects need to be re-cast.



- NOTES:
- A: Granite bollard, granite ref: G654 Kobra, polished finish on all exposed faces. Units to be provided with predrilled holes.
 - Sizes: 450 x 450 x Varied height (600, 750, 900mm)
10mm bullnose to exposed edges except where artworks are to be accommodated as indicated.
Bollards to be provided with pre-drilled holes @150mm c/c, 50mm long, 10mm diameter in bollards as indicated. I.e. the top face or within the cut out. Holes to be filled with coloured resin and polished to create a neat smooth finish flush with the top of the surface of the bollard.
 - B: Class ST5 concrete foundation, 800 x 800 x 200, with 1 layer A393 mesh bottom.
 - C: 4no. 10mm Ø x 100mm m/s dowels into concrete foundation. Dowels fixed into granite with epoxy resin. Bollard to be provided with pre-drilled holes in the base.
 - D: Artwork piece to be provided by Peter McCaughey. Contractor to liaise and co-ordinate installation of artworks with artist.

Revision	Description	By	Date
A	Stage E	LS	04.05.11
B	General amendments	SK	09.08.11
C	BILLING issue	SV	05.10.11
D	BILLING (change to concrete found spec)	LS	19.10.11
E	TENDER ISSUE	LS	18.11.11
F	PLANNING ISSUE	LS	20.08.12

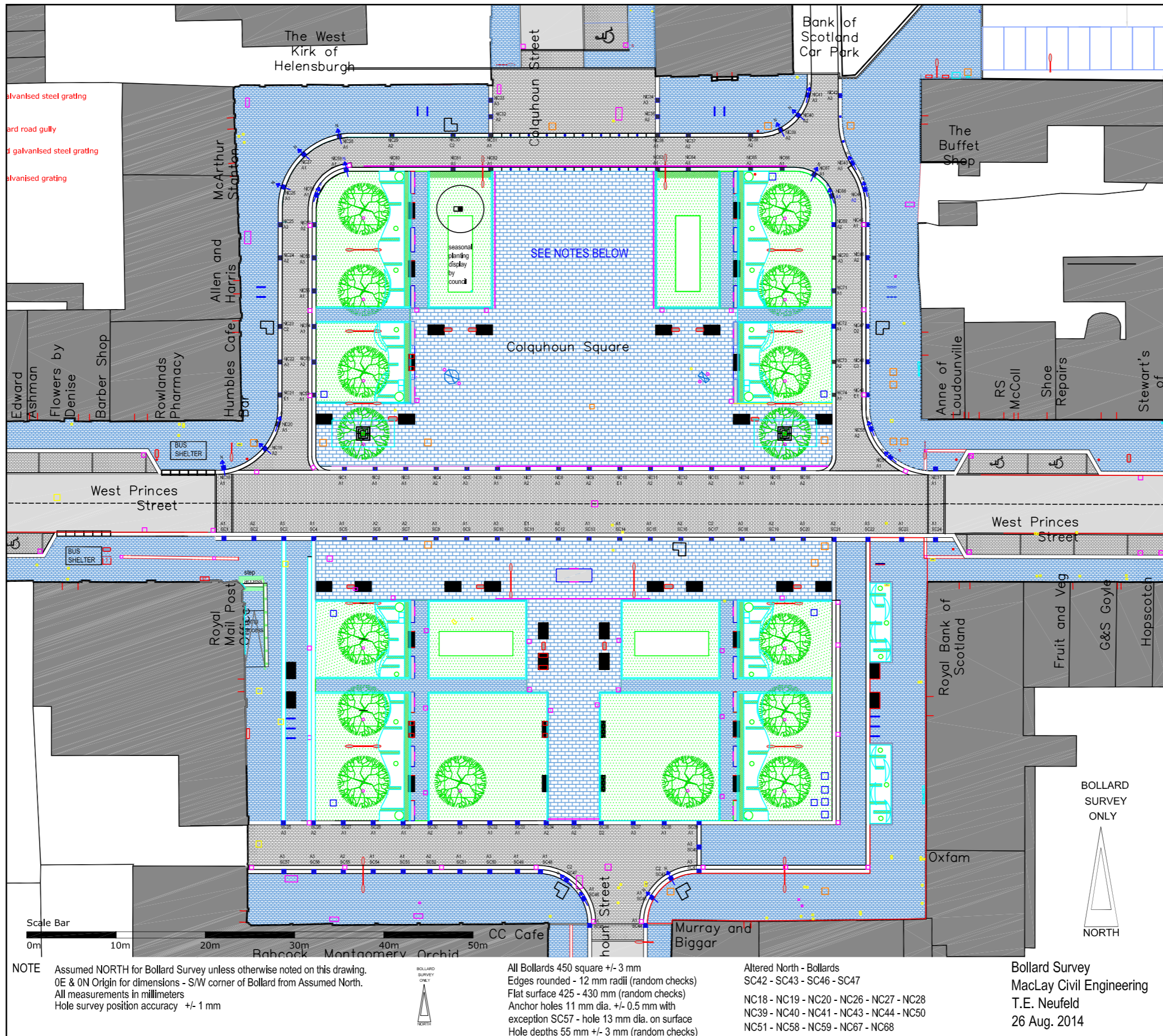
Notes
DO NOT SCALE. Use figured dimensions only. The contractor is requested to check all dimensions before the work is put in hand.
© All copyrights Austin-Smith:Lord LLP
This drawing must only be used for the purpose for which it is supplied and its contents must not be reproduced for any purpose without written permission.
No areas indicated, or areas calculated from this drawing should be used for valuation purposes or as the basis for development contracts.
Austin-Smith:Lord LLP is a limited liability partnership registered in England & Wales. Number OC315362

Drawn LS
Date April 2011
Checked SV
Date April 2011
Scale 1:25 @ A3
Status PLANNING ISSUE

Austin Smith:Lord LLP
Architects Designers Planners
Landscape Architects
296 St Vincent Street
Glasgow G2 5RU
t 0141 223 8500
f 0141 223 8501
e glasgow@austinsmithlord.com

Austin-Smith:Lord
Project Helensburgh CHORD
Description Typical Details - Colquhoun Square
Stone Bollards
Job No. 209275 Drawing No. A(90)017 Revision A B C D E F

Date Plotted:



NOTE Assumed NORTH for Bollard Survey unless otherwise noted on this drawing.
 0E & 0N Origin for dimensions - S/W corner of Bollard from Assumed North.
 All measurements in millimeters
 Hole survey position accuracy +/- 1 mm



All Bollards 450 square +/- 3 mm
 Edges rounded - 12 mm radii (random checks)
 Flat surface 425 - 430 mm (random checks)
 Anchor holes 11 mm dia. +/- 0.5 mm with
 exception SC57 - hole 13 mm dia. on surface
 Hole depths 55 mm +/- 3 mm (random checks)

Altered North - Bollards
 SC42 - SC43 - SC46 - SC47
 NC18 - NC19 - NC20 - NC26 - NC27 - NC28
 NC39 - NC40 - NC41 - NC43 - NC44 - NC50
 NC51 - NC58 - NC59 - NC67 - NC68

Bollard Survey
 MacLay Civil Engineering
 T.E. Neufeld
 26 Aug. 2014

Table issued by Tom Neufeld from MacLay Civil Engineering showing measurements of cored holes in mm to centre of hole. Please refer to map on previous page for location details.

Helensburgh Chord - BOLLARD SURVEY									
See sketch for Numbering reference, Survey Alignment & Survey Notes								03/09/14	
Colquhoun Square South of Princes Street								rev: A	
Bollard	Type	Hole 1		Hole 2		Hole 3		Hole 4	
Number	Ref.	East	North	East	North	East	North	East	North
SC1	A1	149	227	299	224				
SC2	A2	151	223	301	222				
SC3	A3	151	227	299	225				
SC4	A1	148	223	300	221				
SC5	A1	149	227	301	225				
SC6	A2	150	227	300	226				
SC7	A2	152	225	304	224				
SC8	A1	148	225	299	225				
SC9	A1	147	224	298	225				
SC10	A3	153	227	303	225				
SC11	E1	151	178	302	175	152	354	303	357
SC12	A2	150	225	299	225				
SC13	A1	149	224	299	224				
SC14	A1	149	228	299	227				
SC15	A1	149	228	299	226				
SC16	A2	151	225	303	224				
SC17	C2	104 up	104 out	105 up	101 out	Note C2: East Face 1st, North Face 2nd / 201 cube +/- 2mm (Up from bo[om & Out from internal corner)			
SC18	A3	151	225	300	228				
SC19	A2	153	226	305	225				
SC20	A3	150	226	300	224				
SC21	A2	147	226	300	224				
SC22	A3	149	224	300	223				
SC23	A1	150	221	302	223				
SC24	A1	153	223	304	222				
SC25	A3	150	228	301	225				
SC26	A2	150	228	302	226				
SC27	A1	147	229	298	227				
SC28	A1	152	224	303	224				
SC29	A1	149	227	300	226				
SC30	A2	156	227	157	224				
SC31	A1	147	225	299	223				
SC32	A1	152	224	303	221				
SC33	A1	152	224	302	221				
SC34	A2	154	225	305	224				
SC35	A2	149	226	302	224				
SC36	D2	147	225	295	227	250 sq-100 deep +/- 2mm			
SC37	A3	149	224	301	223				
SC38	A1	150	227	300	226				
SC39	A1	147	225	297	224				
SC40	A3	228	148	226	300				
SC41	A3	152	226	302	223				
SC42	C2	102 up	100 out	99 up	101 out	Note C2: East Face 1st, North Face 2nd / 203 cube +/- 2mm (Up from bo[om & Out from internal corner)			
SC43	A1	148	227	300	224				
SC44	A1	225	150	227	303				
SC45	A1	223	148	225	299				
SC46	A1	227	152	228	302				

Helensburgh Chord - BOLLARD SURVEY									
See sketch for Numbering reference, Survey Alignment & Survey Notes								03/09/14	
Colquhoun Square South of Princes Street								rev: A	
Bollard	Type	Hole 1		Hole 2		Hole 3		Hole 4	
Number	Ref.	East	North	East	North	East	North	East	North
SC47	C2	106 up	104 out	104 up	105 out	Note C2: East Face 1st, North Face 2nd / 203 cube +/- 2mm (Up from bo[om & Out from internal corner)			
SC48	A1	147	226	299	224				
SC49	A1	148	227	300	227				
SC50	A3	151	227	302	225				
SC51	A1	148	227	299	225				
SC52	A2	151	228	301	227				
SC53	A1	152	223	303	223				
SC54	A1	150	224	301	221				
SC55	A2	149	227	300	226				
SC56	A3	149	227	299	224				
SC57	A3	148	226	298	223				
Colquhoun Square North of Princes Street									
NC1	A1	147	226	300	225				
NC2	A1	148	225	298	225				
NC3	A1	149	224	302	223				
NC4	A2	150	230	300	228				
NC5	A3	149	225	299	223				
NC6	A1	150	220	301	220				
NC7	A2	150	226	300	225				
NC8	A3	154	227	300	226				
NC9	A2	152	227	301	226				
NC10	E1	150	188	299	188	154	369	304	370
NC11	A2	150	228	302	226				
NC12	A3	147	227	298	227				
NC13	A2	151	227	300	227				
NC14	A1	148	226	300	223				
NC15	A1	146	227	297	226				
NC16	A2	151	227	303	226				
NC17	A1	143	227	298	224				
NC18	A1	148	226	300	225				
NC19	A2	149	229	300	226				
NC20	A1	228	152	228	302				
NC21	E1	176	153	355	153	174	304	354	304
NC22	A3	125	150	125	300				
NC23	C2	107 up	103 out	106 up	100 out	Note C2: East Face 1st, North Face 2nd / 203 cube +/- 2mm (Up from bo[om & Out from internal corner)			
NC24	A2	227	150	227	301				
NC25	A3	225	150	227	300				
NC26	A1	225	149	226	300				
NC27	A1	148	223	298	222				
NC28	A1	147	227	298	227				
NC29	A2	148	228	301	225				
NC30	C2	103 up	105 out	103 up	104 out	Note C2: East Face 1st, North Face 2nd / 203 cube +/- 2mm (Up from bo[om & Out from internal corner)			
NC31	A1	151	224	302	223				
NC32	A2	225	152	225	303				

Helensburgh Chord - BOLLARD SURVEY									
See sketch for Numbering reference, Survey Alignment & Survey Notes								03/09/14	
Colquhoun Square South of Princes Street								rev: A	
Bollard	Type	Hole 1		Hole 2		Hole 3		Hole 4	
Number	Ref.	East	North	East	North	East	North	East	North
NC33	A3	224	150	223	300				
NC34	A3	226	151	226	303				
NC35	A2	225	148	228	299				
NC36	A1	153	225	304	224				
NC37	A2	148	232	300	228				
NC38	A2	150	229	302	228				
NC39	A2	152	229	302	226				
NC40	A2	148	229	301	226				
NC41	A3	224	153	226	303				
NC42	A3	224	153	227	301				
NC43	A3	224	149	227	300				
NC44	A2	229	152	229	301				
NC45	A1	225	147	228	300				
NC46	A2	226	155	227	304				
NC47	D2	223	155	227	305	248 sq-101 deep +/- 2mm			
NC48	C3	104 up	103 out	100 up	101 out	Note C3: East Face 1st, North Face 2nd / 202 cube +/- 4mm (Up from bo[om & Out from internal corner)			
NC49	E1	184	152	368	152	186	303	368	303
NC50	A2	226	152	229	304				
NC51	A1	226	147	228	300				
NC52	A1	224	150	224	301				
NC53	A2	225	149	227	301				
NC54	A1	227	152	226	301				
NC55	A1	223	146	226	298				
NC56	A3	227	149	230	298				
NC57	A2	227	149	230	300				
NC58	A1	227	147	229	298				
NC59	A1	151	224	302	223				
NC60	A3	152	227	303	224				
NC61	A3	152	226	301	227				
NC62	A1	224	148	227	299				
NC63	A1	150	223	301	224				
NC64	A3	150	227	299	223				
NC65	A3	150	227	300	225				
NC66	A1	146	227	297	225				
NC67	A1	149	229	299	227				
NC68	A1	227	147	224	299				
NC69	A2	225	147	226	300				
NC70	A3	222	150	224	297				
NC71	A1	227	151	227	301				
NC72	A1	221	148	225	300				
NC73	A2	223	149	227	300				
NC74	A1	222	147	224	298				

Existing Plinth Positions

artwork:	Butter pads	A3
location:	NC43	75cm height
page:	18	flat
artwork:	St Brides Cross	A1
location:	NC62	45cm height
page:		flat
artwork:	wee Shoes	A2
location:	NC73	60cm height
page:	21	flat
artwork:	Stooky Bill	A3
location:	NC22 ?	75cm height
page:		flat
artwork:	Scout Plaque	E1
location:	NC21	90cm back height
page:	12	60cm front
artwork:	Sugarboat	A2
location:	NC7	60cm height
page:	9	flat
artwork:	Lions Bus	A2
location:	SC6	60cm height
page:	3	flat
artwork:	Henry Bell's bell	A2
location:	SC35	60cm height
page:	6	flat
artwork:	Helensburgh: Helensburgh	
location:		
page:		
artwork:	Sea fever	A3
location:	SC37	75cm height
page:		flat

